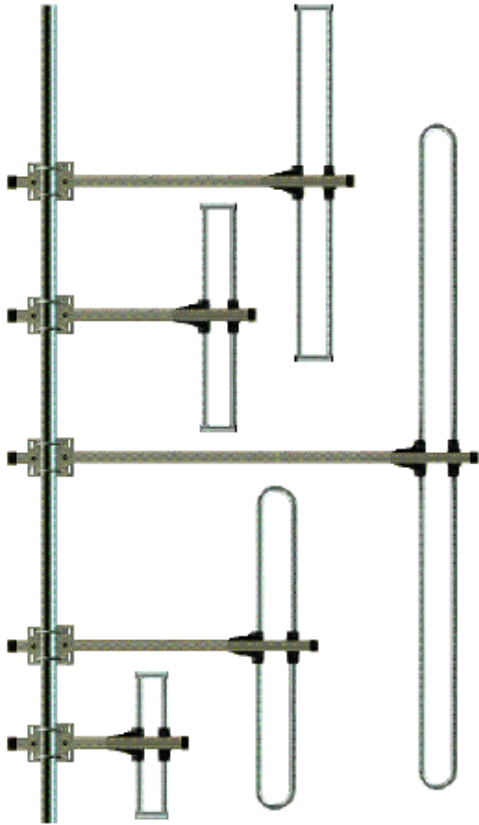


## FOLDED DIPOLE ANTENNAS

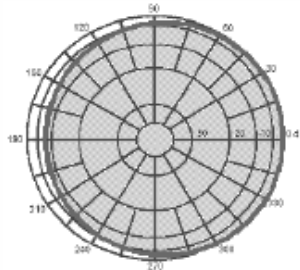


ALL FOLDED DIPOLE & DIPOLE ARRAYS ARE AVAILABLE IN STAINLESS STEEL.

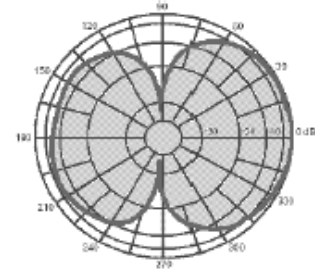
HIGH POWER VERSIONS ARE AVAILABLE ON REQUEST.

ANY CONNECTOR CAN BE FITTED ONTO THE FEED POINT OF THE ANTENNA OR ANTENNA ARRAY ON REQUEST.

DIPOLES CAN BE MOULDED ONTO THE PHASING HARNESS ON REQUEST TO MINIMIZE LOSSES.



VERTICAL RADIATION PATTERN



HORIZONTAL RADIATION PATTERN

REF ORDER CODE	GAIN IN dBi	FREQ. IN MHz	VSWR @ RES.	POWER IN WATT	IMP. IN OHM	WIND LOAD @4545 (N)	BAND WIDTH @ 1.5:1	WEIGHT IN Kg.	TERMINATION	TOTAL LENGTH In Met.	BOOM LENGTH In mm
FD-40	UNITY	37 - 43	<1.5:1	500	50	350	5MHz.	4.0	UHF FEMALE	3440	1500
FD-50	UNITY	42 - 57	<1.5:1	500	50	330	5MHz.	3.4	UHF FEMALE	2500	1500
FD-55	UNITY	51 - 56	<1.5:1	500	50	250	5MHz.	3.2	UHF FEMALE	2406	1500
FD-60	UNITY	66 - 88	<1.5:1	500	50	200	22MHz.	3.0	UHF FEMALE	1800	1250
FD-80	UNITY	77 - 99	<1.5:1	500	50	180	22MHz.	2.5	UHF FEMALE	1340	1250
FD-100	UNITY	88 - 108	<1.5:1	500	50	165	20MHz.	2.4	N MALE	1340	1250
FD-120	UNITY	120 - 130	<1.5:1	500	50	90	10MHz.	2.3	N MALE	1250	1250
FD-130	UNITY	130 - 145	<1.5:1	500	50	86	20MHz.	2.3	N MALE	840	840
FD-145	UNITY	138 - 154	<1.5:1	500	50	80	16MHz.	2.2	N MALE	840	840
FD-160	UNITY	146 - 174	<1.5:1	500	50	75	22MHz.	2.2	N MALE	840	840
FD-200	UNITY	175 - 197	<1.5:1	500	50	70	22MHz.	2.1	N MALE	700	840
FD-220	UNITY	197 - 220	<1.5:1	500	50	65	22MHz.	2.1	N MALE	700	840
FD-230	UNITY	210 - 240	<1.5:1	500	50	65	22MHz.	2.1	N MALE	700	800
FD-250	UNITY	240 - 280	<1.5:1	500	50	60	40MHz.	2.0	N MALE	700	700
FD-340	UNITY	290 - 350	<1.5:1	500	50	55	50MHz.	1.9	N MALE	700	600
FD-360	UNITY	230 - 400	<1.5:1	500	50	50	70MHz.	1.9	N MALE	700	600
FD-400	UNITY	390 - 500	<1.5:1	500	50	45	110MHz.	1.8	N MALE	700	500