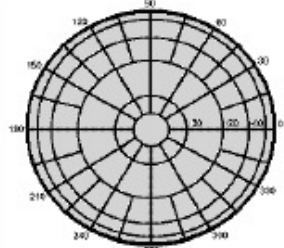
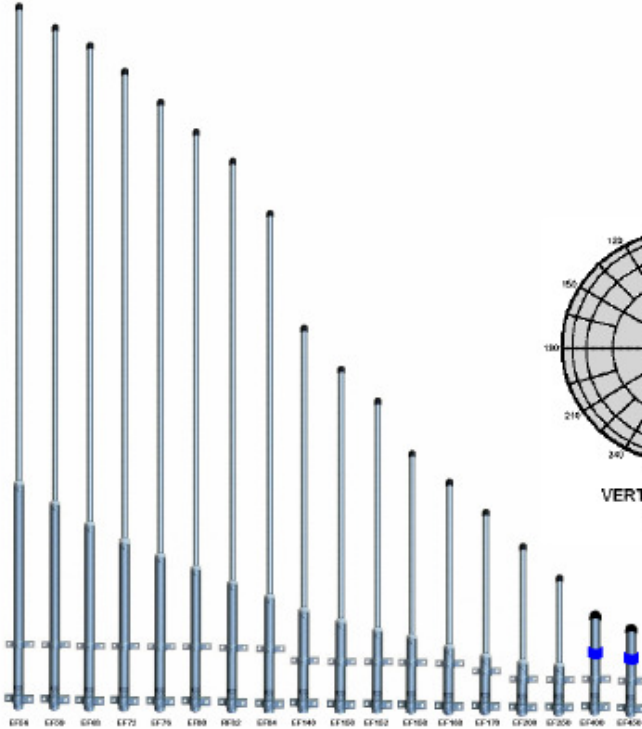
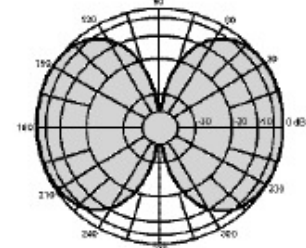


## END-FED 1/2 WAVE BASE STATION ANTENNAS



VERTICAL RADIATION PATTERN



HORIZONTAL RADIATION PATTERN

REORDER CODE	GAIN IN DBI	FREQ. IN MHz	VSWR @ RES.	POWER IN WATT	IMP. IN OHM	BAND WIDTH @ ±0.5dB	WEIGHT IN Kg.	TERMINATION	TOTAL LENGTH ASSEMBLED In Met.	PACKING LENGTH In mm
EF-66	UNITY	64 - 68	<1.6:1	100	50	100%	1.7	UHF FEMALE	4020	2680
EF-68	UNITY	69 - 68	<1.6:1	100	50	100%	1.6	UHF FEMALE	3900	2600
EF-68	UNITY	66 - 70	<1.6:1	100	50	100%	1.4	UHF FEMALE	3200	2150
EF-72	UNITY	70 - 74	<1.6:1	100	50	100%	1.35	UHF FEMALE	3140	2100
EF-76	UNITY	74 - 78	<1.6:1	100	50	100%	1.3	UHF FEMALE	3020	2000
EF-80	UNITY	78 - 82	<1.6:1	100	50	100%	1.25	UHF FEMALE	2800	1800
EF-84	UNITY	82 - 86	<1.6:1	100	50	100%	1.2	UHF FEMALE	2630	1740
EF-140	UNITY	136 - 144	<1.6:1	100	50	100%	1.0	UHF FEMALE	1600	1000
EF-160	UNITY	144 - 164	<1.6:1	100	50	100%	1.0	UHF FEMALE	1407	938
EF-182	UNITY	148 - 166	<1.6:1	100	50	100%	0.9	UHF FEMALE	1366	910
EF-188	UNITY	164 - 162	<1.6:1	100	50	100%	0.9	UHF FEMALE	1324	883
EF-188	UNITY	160 - 168	<1.6:1	100	50	100%	0.9	UHF FEMALE	1287	868
EF-170	UNITY	166 - 174	<1.6:1	100	50	100%	0.8	UHF FEMALE	1260	883
EF-200	UNITY	190 - 210	<1.6:1	100	50	100%	0.75	UHF FEMALE	709	868
EF-260	UNITY	247 - 263	<1.6:1	100	50	100%	0.6	UHF FEMALE	81	833
EF-400	UNITY	390 - 430	<1.6:1	100	50	100%	0.6	N TYPE FEMALE	476	476
EF-450	UNITY	440 - 470	<1.6:1	100	50	100%	0.6	N TYPE FEMALE	434	434